

Keighley and Shipley area Family Hub

Find us at

Rainbow Family Hub

14 Braithwaite Grove, BD22 6JB

Strong Close Nursery School

Airedale Road, BD21 4LW

We also deliver services at

Keighley Library

North Street, BD21 3SX

Shipley Library

2 Well Croft, BD18 3QH

The Trinity Centre

John Escritt Road, Bingley, BD16 2ST

Owlet Family Centre

Barncroft, Shipley, BD18 2JG

The Hive

For more information on where we are and what we do, scan the QR code or visit fyi.bradford.gov.uk



Parenting programmes

We have a range of fantastic parenting programmes delivered at various times (we know how busy family life can be!) You'll meet others in a similar situation in an informal and supportive atmosphere.

You don't need a referral from another service, you can simply apply yourself on fyi.bradford.gov.uk or call us.

Our recent programmes include:

Incredible Years pre-school - For parents of children aged two & half to four years. The programme is preparing children for school readiness, boundaries, routines & positive praise. Parents also receive a free gift to put into practice what they have learnt that day. No other specific criteria. Anyone providing the care to the child can attend such as both parents, grandparents etc. We also provide a free creche.

Our regular events

Play and learn – our free sessions open to all families with children 0-5. Enjoy fun activities songs and stories as well as tips to support your child's wellbeing and development.

Baby feeding support sessions - run every week by friendly experienced infant feeding practitioners with specialist support available. Any questions or concerns can be supported as well as every day feeding support. Breast pumps are available to borrow if you have seen a practitioner and there is a need identified. Please do just drop in, no booking needed.

Sensory room – Call or email us to book sessions at Rainbow. For sessions at Strong Close Nursery (Term Time) call 01535 605272. During school holidays contact Rainbow. For Owlet call 01274 436600.

SEND inclusive drop-in - open to all parents, carers and their children. Includes multi-sensory story time & access to SEND resources to promote speech, language & sensory exploration.

Youth Club – for ages 11-19. A warm, safe and inviting space for young people with lots of activities on offer.

Wise Owls Language development advice - if you're concerned about your 18m-4 year old's language development come get advice from our language development workers.

Parent Led SEND play - A parent-led play session for SEND, for families with children aged 6-11. Places are limited so please book your place by calling us.

Portage play group - referral only; contact Christine on 07977160187 for details.

Baby Clinic - drop in to get your baby weighed

Maternity Circle - a safe and welcoming space for women planning pregnancy, pregnant women and new mothers, providing information on maternal health and wellbeing and parenting until baby is 2.

Children's Community Support Team - appointment based support for families with children and young people with SEND. Referral only; contact Kelly on 07582109892 or Naina on 07582101003 for more info.

Arts and crafts group - For adults and children aged 0-4.

Uniform Bank - All age Primary School uniform available - Polo shirts, trousers, dresses, various coloured sweatshirts (no logo)

SEND Parent-led support group - meet with other parent carers in a safe and welcoming space to share experiences and get support.

Jump Aboard - educational psychologist drop-in. Can help with autism, ADHD, speech and language, learning difficulties, social, emotional and sensory needs.

DWP supporting families employment advice - Benefit Advice, Jobs, Training & Education, Free Early Education & Childcare advice, Debts, Money Matters Advice, Domestic Abuse, Mental Health & Wellbeing, Drug & Alcohol, Family Support, Low School Attendance, Support with Foodbanks, plus much more.

Get in touch

☎ Call us on 01535 618005 (open Mon-Thur 8.30am to 5pm, 8.30am to 4.30pm Fri)

F Visit us at fb.com/KeighleyandShipleyFamilyHub

✉ Email us at Familyhubkeighleyshipley@bradfordcft.org.uk

Keighley and Shipley Family Hub - September timetable

Monday

Care and Share
Rainbow Hub's FREE
pre-loved shop
9am - 4pm

Sensory room
Rainbow 9 - 4pm
Strong close nursery
school 12.30 - 4.30pm



Midwife Clinics
Appointment only
All day at Rainbow, Strong
Close nursery school and
Owlet 9am - 4pm

Play and Learn sessions
From 9th September
at Keighley Library: 9.30am
to 10.30am
at Shipley Library: 1pm - 2pm

**Baby feeding support
sessions**
Trinity Centre
30th Sept, 10am - 11.30am

Baby health visitor clinic
Rainbow
2nd, 16th and
30th Sept
1pm - 3pm

**DWP supporting families
employment advice**
Rainbow
1.30pm - 3pm

Tuesday

Care and Share
Rainbow Hub's FREE
pre-loved shop
9am - 4pm

Sensory room
Rainbow 9 - 4pm
Strong close nursery school
3.30 - 4.30pm
Owlet Family hub 9 - 12pm

Midwife Clinics
Appointment only
Strong Close nursery
school and Owlet 9am-4pm;
Rainbow 1.30 - 4pm

Coffee Morning
Rainbow (inc Uniform Bank
on 3rd Sept)
9am - 11am

School nurse
3rd September
at Shipley Library: 9.30am -
11am
at Rainbow: 1pm - 2.30pm

Maternity Circle
The Hive, 12pm - 2pm
3rd and 17th Sept

**SEND Parent-led
Support Group**
3rd and 17th Sept
Rainbow, 1pm - 2.30pm
SEND inclusive session

Keighley Library
3rd Sept 9.30 - 10.30am

**Children's Community
Support Team**
Shipley Library
3rd Sept 9am - 3pm

Wednesday

Care and Share
Rainbow Hub's FREE
pre-loved shop
9am - 4pm

Sensory room
Rainbow 9-4pm
Strong close nursery school
3.30 - 4.30pm



Midwife Clinics
Appointment only
Strong Close nursery and
Owlet 9am - 4pm

**Children's Community
Support Team**
4th Sept
Rainbow, 9am - 3pm

Baby feeding drop-in
Rainbow
11:30am - 2pm



Jump Aboard
Rainbow, 1pm - 3pm
18th Sept

Maternity Circle
Rainbow, 12pm - 2pm
11th and 25th Sept

Open Access Youth Club
Rainbow
6pm - 8.30pm

Thursday

Care and Share
Rainbow Hub's FREE
pre-loved shop
9am - 4pm

Sensory room
Rainbow 9-4pm
Strong close
nursery school
3.30 - 4.30pm

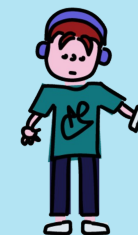


Midwife Clinics
Appointment
only
All day at
Rainbow,
Strong Close
nursery
school and
Owlet
9am - 4pm



Arts and Crafts group
Rainbow
1.30pm - 3pm

Maternity Circle
Shipley Library
1.30pm - 3pm



Friday

Care and Share
Rainbow Hub's FREE
pre-loved shop
9am - 4pm

Sensory room
Rainbow 9 - 4pm
Strong close nursery
school 9am - 12.30pm
Owlet 9am - 12pm

Midwife Clinics
Appointment only
Rainbow 9am - 12:30pm
Owlet 9am - 4pm

**Wise Owls language
development**
Owlet Family Centre
9.30am - 10.30am

**Parent-led SEND play
session for 6-11 years**
Book via Rainbow hub
3.30pm - 5pm
(appointment only)

