

# Bradford West area Family Hub

## Farcliffe Family Hub

56 Toller Lane, BD8 8QH

## Bevan Family Hub

Family Hub entrance: Dale Street, BD1 4HT  
Piccadilly entrance: 14 Piccadilly, BD1 3LS

### We also deliver services at:

#### St Edmund's Nursery School and Children's Centre

Washington Street, BD8 9QW

#### Abbey Green Nursery

Green Lane, BD8 8HT

#### Thornaby Hub

115 Thornaby Drive, Clayton, BD14 6HP

#### Midland Road Nursery School

Bateman Street, BD8 7DJ

#### City Library

Centenary Square, BD1 1SD

For more information on where we are and what we do, scan the QR code or visit [fyi.bradford.gov.uk](http://fyi.bradford.gov.uk)

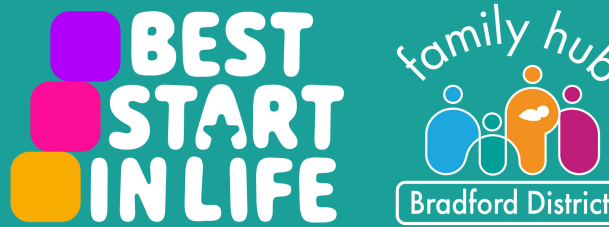


### Get in touch

☎ Call us on 01274 436700 (Farcliffe) or 01274 322400 (Bevan)

✉ Email [Familyhubwest@bradfordcft.org.uk](mailto:Familyhubwest@bradfordcft.org.uk)

F Visit us at [fb.com/BradfordWestFamilyHub](https://fb.com/BradfordWestFamilyHub)



### Parenting programmes

We have a range of fantastic parenting programmes delivered at various times. You'll meet others in a similar situation in an informal and supportive atmosphere.

**NEW:** Support for parents, carers, teens and adults - free online courses that you can access 'on demand', day or night, pause and come back to whenever suits you.

Just visit us at [fyi.bradford.gov.uk](http://fyi.bradford.gov.uk) and select 'parenting programmes pathway' to get started.

### Digital Spaces

Do you need data, access to a laptop, or help to get online? Maybe you need to study, apply for a job, a school place or look for housing?

At Farcliffe Family Hub, you can access free wi-fi, use our computers and quiet space, headphones and printing facilities.

We can also give you support with getting online if you need it. Give us a call, a message on social media or send us an email for more information.

### FREE SIM cards

We can now provide 6 months of data to families through a FREE SIM card.

For more information please contact us or pop in to Farcliffe Hub and see one of our lovely Family Navigators!



**Women's chit chat group** – drop-in for a warm drink, chat and peer support.

**Sensory play room** – a therapeutic space, perfect for children with SEND. Call us to book.

**Clothes shack** – a free drop-in clothes recycle shop.

**Job Club (City Library)** - free work clubs to learn IT skills, create/update your CV, look for jobs and more.

**Baby feeding support sessions** - infant feeding practitioners with specialist support available. Breast pumps available to borrow if you've seen a practitioner and a need is identified.

**Study Stations** - Now bookable through reception for everyone to use as a quiet space to work.

**Bradford Stronger Together Coffee Morning** - A relaxing time for parents of children who have additional needs.

**Farcliffe Bookable Read and Rhyme Room** - bookable by the hour for families to enjoy reading with their children.

**Legal Support** - Free family law advice. Call us to book.

**Carer's Resource Coffee Morning** - Drop in session for families for those with SEND.

**Birth registrations** - scan the QR code to the left of this page, [click here](#) (when using this timetable electronically) or call 01274 432151 for an appointment.

**Bookable Outdoor Play Area** - Our secure outdoor play area is bookable by ringing us on 01274 436700 Monday through to Friday. This can be used 1-1 or in a small group up to 10 people.

**Millside maternity circle** - a safe space for all to come along and connect with one another, reduce social isolation and to be supported on their parenting journey. Just drop in.

**Stay and Play** - Please ring 01274 436700 to book a space on to our stay and play sessions which are for pre-school age children in which they can enjoy fun times. Spaces limited.

**Education drop-in** - drop-in session for parents/ carers of children 5 to 16. Support with school attendance concerns.

Discuss worries, connect with support services, and receive advice from attendance support workers. No booking required; email [Attendance@bradford.gov.uk](mailto:Attendance@bradford.gov.uk) with any queries.

**Mind the Gap session** - contact [rachel@mind-the-gap.org.uk](mailto:rachel@mind-the-gap.org.uk)

**Bumps and babies** - A safe space for pregnant women and new parent/carers with babies to meet, share stories and make friends. Come along, join the fun and sometimes messy baby friendly activities and learn about our programmes.

**Cuppa in the Community** - Welcoming space for all to have a warm drink and have a chat with our family navigators to see where we can support and signpost to appropriate services.

**SEND Toilet Training Workshop** - children with SEND may take longer to achieve toilet training and need more support. The SEND/School Nursing Team can help. Booking essential; email [sendtoilettraining@bdct.nhs.uk](mailto:sendtoilettraining@bdct.nhs.uk) or ask at the hub for info.

# West area Family Hub - May Timetable

## Monday

**Midwife clinic**  
Farcliffe (all day)  
(Appointment only)

**Children's community Support Team (SEND)**  
(appointment only)  
Farcliffe, 11th May  
9am to 3pm

**Clothes shack**  
Farcliffe, 10am to 3pm

**Study Stations**  
Farcliffe (all day)



**Bookable Outdoor Play Area**  
Farcliffe, 10am to 2pm

**Family Law Advice**  
Farcliffe (appointment only)  
10am to 12 noon

**Carer's Resource Coffee Morning**  
Farcliffe, 11th May  
10.30am to 1pm

**Bookable Sensory Room**  
Farcliffe, 10am to 3pm

**Cuppa in the Community**  
Farcliffe, 1pm to 3pm

**Farcliffe Bookable Read and Rhyme Room**  
1pm to 3pm



## Tuesday

**Midwife clinic**  
Farcliffe (Appointment only)  
(all day)

**Clothes shack**  
Farcliffe, 10am to 3pm

**Study Stations**  
Farcliffe (all day)

**Play and Learn**  
Thornaby Hub  
(term time only)  
9am to 10.30pm



**Education drop-in session**  
Farcliffe, 5th, 12th, 19th May  
10am to 12 noon

**Bookable Sensory Room**  
Farcliffe, 10am to 3pm

**Bookable Outdoor Play Area**  
Farcliffe, 10am to 2pm

**Women's chit-chat group**  
Farcliffe, 1pm to 3pm (drop-in)

**Farcliffe Bookable Read and Rhyme Room**  
1pm to 3pm

## Wednesday

**Midwife clinic**  
Farcliffe (all day)  
(Appointment only)

**Study Stations**  
Farcliffe (all day)



**Clothes shack**  
Farcliffe, 10am to 3pm

**Well Baby/ Weighing Clinic with Stay and Play**  
Bethel Baptist Church,  
BD15 9LL  
9.30am to 12 noon

**Bookable sensory room**  
Farcliffe, 10am to 3pm

**Bookable Outdoor Play Area**  
Farcliffe, 10am to 2pm

**Baby feeding support sessions**  
Farcliffe, 11.30am to 2.30pm

**Parent and Carer Panel**  
Farcliffe  
6th May, 1pm to 3pm

**Farcliffe Bookable Read and Rhyme Room**  
1pm to 3pm



## Thursday

**Register the birth of your baby**  
Farcliffe (appointment only)

**Midwife & development clinic**  
Farcliffe, 9am to 5pm  
(Appointment only)



**Study Stations**  
Farcliffe (all day)

**Health Visitor Reviews**  
(by invitation)  
Farcliffe, 9am to 1pm

**Clothes shack**  
Farcliffe, 10am to 3pm

**Well Baby/ Weighing Clinic**  
Farcliffe, 9.30am to 12pm  
and 1pm to 3pm (drop-in)

**Maternity Circle**  
Millside Centre, BD1 2HS  
10am to 11.30am

**Job/ Work Club**  
City Library, 10am to 12 noon

**Bookable Outdoor Play Area**  
Farcliffe, 10am to 2pm

**Bookable sensory room**  
Farcliffe, 10am to 3pm

**Stay and Play**  
Farcliffe (term time only)  
1pm to 3pm

**Farcliffe Bookable Read and Rhyme Room**  
1pm to 3pm

**Bumps and babies (for pre-walkers only)**  
Farcliffe, 1.30pm to 2.45pm

## Friday

**Midwife clinic**  
Farcliffe (all day)  
(Appointment only)



**Study Stations**  
Farcliffe (all day)

**Bookable sensory room**  
Farcliffe, 10am to 3pm

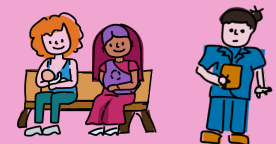
**Farcliffe Bookable Read and Rhyme Room - 1pm to 3pm**

**Clothes shack**  
Farcliffe, 10am to 3pm

**Bookable Outdoor Play Area**  
Farcliffe, 10am to 2pm

**Online SEND Toilet Training Workshop**  
29th May  
9.30am to 11.30am

**My Creative Club by Mind the Gap (SEND)**  
(appointment only)  
Farcliffe, 1.30pm to 2.30pm



# Bevan Family Hub - April Timetable

## Monday

### New to English (ESOL)

10am - 12 noon  
Just drop in

Learn English to help with everyday life; shopping, school and going to the doctor. We can help with speaking, listening, reading, and writing in English.

Enter via: Piccadilly



## Tuesday

### Midwife clinic

9am to 12 noon  
Appointments only - book via midwife

Meet with your community midwife for all aspects of your care during pregnancy.

Enter via: Dale Street

### Family Hub Play Together

1pm to 2.30pm, drop in  
Come along and join in our fun, and sometimes messy, activities for families with children aged 0-2. There is time and space to have a chat with our friendly Family Navigators for advice and support.

Enter via: Dale Street

### Welcoming Space

26th May, 10am to 1pm  
Struggling with the rising cost of living? Come use the free wifi, charge any devices. Refreshments. Family friendly activities for the school holiday.

Enter via: Piccadilly

### You and Me cafe

2.00pm to 4.00pm  
Call/txt 07904953864 or email [info@volunteeringbradford.org](mailto:info@volunteeringbradford.org)  
A welcoming creative space for adults with learning disabilities to meet, socialise, and enjoy arts and crafts and other activities. Run by [volunteering@Bradford](mailto:volunteering@Bradford), there are also training opportunities available.

Enter via: Piccadilly

## Wednesday

### Your Space (for people seeking sanctuary)

10am - 12 noon  
Just drop in

A welcoming space for asylum seekers and refugees. Get advice and support from services such as British Red Cross, Refugee Action, Solace, Housing and much more.

Enter via: Piccadilly

### Read and Rhyme

1pm to 2.30pm  
Just drop in

Join our fun and playful sessions with lots of singing and rhyming to help with talking and reading! For families with children ages 0-2. There is time and space to have a chat with our friendly Family Navigators for advice and support.

Enter via: Dale Street



## Thursday

### Family Navigator Support

9am to 12 noon, drop in  
Come chat with our friendly Family Navigators. We can:

- Welcome you into our Family Hub.
- Find groups and activities
- Signpost to services and support

Enter via: Dale Street



### Bevan Babies

9.30am to 11.30am

Just drop in

Family stay and play session, soft and messy play, singing and dancing, meet other families, snacks available and lots of fun to be had!

Enter via: Piccadilly

### Baby Feeding drop-in

9.30am to 11.30am  
Meet with our friendly infant feeding team who can support with every day feeding questions or concerns. They can provide specialist advice and support where needed.

Enter via: Dale Street

### Baby Massage

12.30am to 2.00pm  
Booking Required  
5 week course delivered by our friendly Family Hub staff who are trained in baby massage through the International Association of Infant Massage (IAIM). Book on [fyi.bradford.gov.uk](http://fyi.bradford.gov.uk) or ask a member of staff



## Friday

### Family Navigator Support

9am to 12 noon, drop in  
Come chat with our friendly Family Navigators. We can:

- Welcome you into our Family Hub.
- Find groups and activities
- Signpost to services and support

Enter via: Dale Street



### Health Visitor Development Clinic (mornings)

By appointment only  
Call Health Visiting service on 01274 221223 or text chat health on 07312263240

Enter via: Dale Street



### Well Baby/ Weighing Clinic

1pm to 3pm

Drop-in.

Enter via: Dale Street