

Keighley and Shipley area Family Hub

Find us at

Rainbow Family Hub

14 Braithwaite Grove, BD22 6JB

Strong Close Nursery School

Airedale Road, BD21 4LW

We also deliver services at

Keighley Library

North Street, BD21 3SX

Shipley Library

2 Well Croft, BD18 3QH

The Trinity Centre

John Escritt Road, Bingley, BD16 2ST

Owlet Family Centre

Barncroft, Shipley, BD18 2JG

The Hive, Silsden

Elliott Street, Silsden, BD20 0DE

For more information
on where we are and
what we do, scan the
QR code or visit
fyi.bradford.gov.uk



Parenting programmes

We have a range of fantastic parenting programmes delivered at various times (we know how busy family life can be!) You'll meet others in a similar situation in an informal and supportive atmosphere.

You don't need a referral from another service, you can simply apply yourself on fyi.bradford.gov.uk or call us.

Our recent programmes include:

Incredible Years pre-school - For parents of children aged two & half to four years. The programme is preparing children for school readiness, boundaries, routines & positive praise. Parents also receive a free gift to put into practice what they have learnt that day. No other specific criteria. Anyone providing the care to the child can attend such as both parents, grandparents etc. We also provide a free creche.

Our regular events

Play and learn – our free sessions open to all families with children 0-5. Enjoy fun activities songs and stories as well as tips to support your child's wellbeing and development.

Baby feeding support sessions - run every week by friendly experienced infant feeding practitioners with specialist support available. Any questions or concerns can be supported as well as every day feeding support. Breast pumps are available to borrow if you have seen a practitioner and there is a need identified. Please do just drop in, no booking needed.

Sensory room – Call or email us to book sessions at Rainbow. For sessions at Strong Close Nursery (Term Time) call 01535 605272. During school holidays contact Rainbow. For Owlet call 01274 436600.

SEND inclusive drop-in - open to all parents, carers and their children. Includes multi-sensory story time & access to SEND resources to promote speech, language & sensory exploration.

Youth Club – for ages 11-19. A warm, safe and inviting space for young people with lots of activities on offer.

Wise Owls Language development advice - if you're concerned about your 18m-4 year old's language development come get advice from our language development workers.

Parent Led SEND play - A parent-led play session for SEND, for families with children aged 6-11. Places are limited so please book your place by calling us.

Cliffe Castle SEND event - please get in touch with Rainbow family hub for more details and to book.

Baby Clinic - drop in to get your baby weighed

Maternity Circle - offer a safe and welcoming space in a community environment. Come along to one of our sessions and meet other pregnant women, new mums and babies. We will provide information around maternal health, wellbeing and parenting as well as the wider support available from other local services (baby weighing available).

Children's Community Support Team - appointment based support for families with children and young people with SEND. Referral only; contact Kelly on 07582109892 or Naina on 07582101003 for more info.

Arts and crafts group - For adults and children aged 0-4.

Uniform Bank - All age Primary School uniform available - Polo shirts, trousers, dresses, various coloured sweatshirts (no logo)

SEND Parent-led support - meet with other parent carers in a safe, welcoming space to share experiences and get support.

Jump Aboard - educational psychologist drop-in. Can help with autism, ADHD, speech and language, learning difficulties, social, emotional and sensory needs.

DWP supporting families employment advice - Benefit Advice, Jobs, Training & Education, Free Early Education & Childcare advice, Debts, Money Matters Advice, Domestic Abuse, Mental Health & Wellbeing, Drug & Alcohol, Family Support, School Attendance, Foodbanks, plus much more.

Get in touch

☎ Call us on 01535 618005 (open Mon-Thur 8.30am to 5pm, 8.30am to 4.30pm Fri)

F Visit us at fb.com/KeighleyandShipleyFamilyHub

✉ Email us at Familyhubkeighleyshipley@bradfordcft.org.uk

Keighley and Shipley Family Hub - October timetable

Monday

Care and Share
Rainbow Hub's FREE
pre-loved shop
9am - 4pm

Sensory room
Rainbow 9-4pm
Strong close nursery
school 12.30-4.30pm



Midwife Clinics
Appointment only
All day at Rainbow, Strong
Close nursery school and
Owlet 9am-4pm

Play and Learn sessions
at Keighley Library - 9.30am
to 10.30am (term time only)
at Shipley Library - 1pm to
2pm (term time only)

**Baby feeding support
sessions**
Trinity Centre
28th Oct, 10am to 11.30am

Baby health visitor clinic
Rainbow
14th and 28th Oct
1pm to 3pm

**DWP supporting families
employment advice**
Rainbow
1.30pm to 3pm

Tuesday

Care and Share
Rainbow Hub's FREE
pre-loved shop
9am - 4pm

Sensory room
Rainbow 9-4pm
Strong close nursery school
3.30-4.30pm
Owlet Family hub 9-12pm

Midwife Clinics
Appointment only
Strong Close nursery
school and Owlet 9am-4pm;
Rainbow 1.30 - 4pm

Coffee Morning
Rainbow, 9am to 11am

School nurse
1st October
Shipley Library: 9.30 - 11am
Rainbow: 1pm - 2.30pm

Maternity Circle
The Hive, 12pm to 2pm
1st and 15th Oct

**SEND Parent-led
Support Group**
1st, 15th and 29th Oct
Rainbow, 1pm - 2.30pm
SEND inclusive session
Keighley Library
1st Oct 9.30 - 10:30am

**Children's Community
Support Team**
Shipley Library
1st Oct 9am - 3pm

**SEND Family
Wellbeing session**
Cliffe Castle
29th Oct, 1pm - 3pm

Wednesday

Care and Share
Rainbow Hub's FREE
pre-loved shop
9am - 4pm

Sensory room
Rainbow 9-4pm
Strong close nursery school
3.30-4.30pm



Midwife Clinics
Appointment only
Strong Close nursery and
Owlet 9am - 4pm

**Children's Community
Support Team**
2nd Oct
Rainbow, 9am - 3pm

Halloween Stay and Play
Rainbow, 10am - 12 noon
30th October

Baby feeding drop-in
Rainbow
11.30am - 2pm



Jump Aboard
Rainbow, timing TBC
2nd Oct

Maternity Circle
Rainbow, 12pm - 2pm
9th and 23rd Oct

Open Access Youth Club
Rainbow
6pm to 8.30pm

Thursday

Care and Share
Rainbow Hub's FREE
pre-loved shop
9am - 4pm

Sensory room
Rainbow 9-4pm
Strong close
nursery school
3.30 to 4.30pm

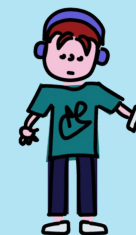


Midwife Clinics
Appointment
only
All day at
Rainbow,
Strong Close
nursery
school and
Owlet
9am to 4pm



Arts and Crafts group
Rainbow
1.30pm to 3pm

Maternity Circle
Shipley Library
1.30pm to 3pm



Friday

Care and Share
Rainbow Hub's FREE
pre-loved shop
9am - 4pm

Sensory room
Rainbow 9 - 4pm
Strong close nursery
school 9am - 12.30pm
Owlet 9am - 12pm

Midwife Clinics
Appointment only
Rainbow 9am - 12:30pm
Owlet 9am - 4pm

**Wise Owls language
development**
Owlet Family Centre
9.30am to 10.30am
(term time only)

**Parent-led SEND play
session for 6-11 years**
Book via Rainbow hub
3.30pm to 5pm
(appointment only)

