

Bradford East Locality Family Hub

Barkerend Family Hub

365 Barkerend Road, BD3 8QX

Gateway Family Hub

43 Thackeray Road, Ravenscliffe, BD10 0JR

We also deliver services at:

Woodroyd Centre

Woodroyd Road, West Bowling, BD5 8EL

Communityworks

Undercliffe Lane, BD3 0DW

Canterbury Nursery School

Basil Street, Canterbury, BD5 9HL

Fagley Primary School

Falsgrave Avenue, BD2 3PU

Eccleshill Library

Bolton Road, BD2 4SR

St John's Church

Neville Road, BD4 8TU

Rockwell Centre

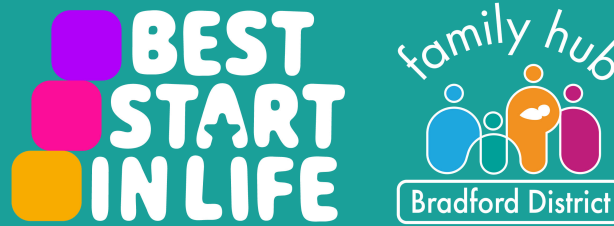
Summerfield Road, BD10 8DP

For more information on where we are and what we do, scan the QR code or visit fyi.bradford.gov.uk



Get in touch

- ☎ Call us on 01274 437523 (open Mon-Thur 8.30am-5pm, 8.30am-4.30pm Fri)
- F Visit us at [fb.com/BradfordEastFamilyHub](https://www.facebook.com/BradfordEastFamilyHub)
- @ Email us at Familyhubeast@bradfordcft.org.uk



Parenting programmes

We have a range of fantastic parenting programmes for parents, carers and teens including online courses that you can access 'on demand', day or night, pause and come back to whenever suits you and groups that you can attend 'live' with other people or families, delivered both online and in person.

You don't need a referral from another service, you can apply yourself on fyi.bradford.gov.uk (select 'parenting programmes pathway') or call us.

Digital Spaces

Do you need data, access to a laptop, or help to get online? Maybe you need to study, apply for a job, a school place or look for housing?

At Barkerend and Gateway Family Hubs, you can access free wi-fi on your own device or book a session to use our computers and quiet space headphones and printing facilities.

We can also give you support with getting online if you need it. Give us a call to book a session, message us on social media or send us an email.

FREE SIM cards

We can now provide 6 months of data to families who need it. For more information please contact us or pop in to Barkerend or Gateway Hubs and see one of our lovely Family Navigators!



Birth registrations - scan the QR code to the left of this page, **click here** (if using this timetable electronically) or call 01274 432151 for an appointment.

Sensory Room - a therapeutic space for all families devoted to relaxing/developing the senses. Call to book.

SEND Parent/Carer's Coffee Morning - a place for parent carers to share experiences and get support. Email chaslam@carersresource.org or call 0808 501593.

Baby and Midwife Clinics -including Clover midwife clinic. Speak to your midwife for an appointment.

School Nurse Team - Support with eating, lifestyles, relationships, sleep & more. Drop in/call 01274221203.

Baby Feeding drop-ins -The Community Infant Feeding Team offer friendly, warm, specialist support, including social support from volunteers for all breastfeeding and other feeding situations, whatever the age of your baby.

Maternity Circle - drop in, we run a wide range of sessions to support pregnant mums and those with children under 2.

Warm Space - Warm welcoming room with hot drink and soup with a bread roll or snacks. Come along and join in a chat, get some info and advice if needed.

Stay and Play - Session for pre school children and parents/carers offering the chance to socialise and play. For Under 5's.

Education drop-in - A drop-in session for parents and carers of children aged 5 to 16 which provides non-judgmental support with school attendance concerns. It's a safe space for you to discuss worries, connect with support services, and get advice from attendance support workers. No booking required; email Attendance@bradford.gov.uk with queries.

Kids Time Workshop - Parents with mental illness and children to work together in dispelling stigma and building stronger families. The children can be 0-19 yrs as we will run drama groups for younger ones and Teen talk for teens as well as an adult group. Referral only, call Mind on 01274 730815 for more information.

Children's Community Support Team - supporting families with children with SEND needs in Bradford East.

Well Baby/Weighing Clinic - For an appointment, call the Health Visiting service on 01274 221223 or text chat health on 07312263240.

Family Navigator drop-in - speak to our friendly family navigators, we can welcome you into our Family Hub, find groups and activities and signpost to services and support.

Happy Health Day Event - Enjoy food and refreshments, fun activities for children and goodies to take away. Everyone is welcome!

Bradford East Locality Family Hub - April 2026 Timetable

Monday

Midwife Clinics
Barkerend and Woodroyd Centre

Tea and coffee morning
Rockwell Centre,
BD10 8DP
(term-time only)
9.15am to 11.15am

Maternity Circle
St Andrew's
Methodist Church
BD2 4HQ
10am to 12 noon

**SEND parent/carer's
resource coffee morning**
Barkerend
27th April
10.30am to 12pm

Maternity Circle
CommunityWorks
12.30pm to 2pm



Tuesday

Midwife Clinics
Barkerend and Woodroyd Centre

Well Baby/ Weigh in Clinic
Barkerend
9.30am to 11.30am

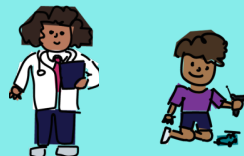
Stay and Play
Gateway, 10am to 12 noon

**Free Education
drop-in at Barkerend**
14th and 28th April
10am to 12 noon

**Baby Feeding Support
Sessions**
Wrose Health Centre
1pm to 3pm

Play and Learn
Eccleshill Library
1pm to 2pm (term time only)

Well Baby/Weigh in Clinic
(appointment only)
St John's Church
BD4 8TU
2pm to 3.30pm



Wednesday

Midwife Clinics
Barkerend and Woodroyd Centre

**Register the birth of your
baby at Barkerend**
(appointment only)

**Baby Feeding Support
Sessions**
Gateway
10am to 12 noon



**Well Baby/
Weighing Clinic**
Gateway
9.30am to 11.30am

**Health Visitor
Development Reviews**
Barkerend (by invitation)
9.30am to 12 noon

Maternity Circle
Gateway
9.30am to 11.30am

Play and Learn
CommunityWorks
12.45pm to 2.15pm
(term time only)



Thursday

Midwife Clinics
Barkerend and Woodroyd Centre

Coffee Morning
Barkerend, 9am to 11am

**Children's Community
Support Team**
Barkerend, 9am - 3pm
2nd Apr (appointment only)

Well Baby/Weigh in Clinic
(appointment only)
Wrose Health Centre,
BD2 1QG
9.30am to 11.30am

Play and Learn
Burnett Fields, BD5 7PE
16th, 23rd and 30th April
9.30am to 11am

**Online SEND Toilet
Training Workshop**
9th April, 9.30am to 11.30am

SEND Coffee Morning
Fagley Primary, BD2 3PU
2nd Apr, 9.15am to 10.15am

**Education drop-in at
Gateway**
9th and 23rd April
10am to 12 noon

Maternity Circle
Millside Centre, BD1 2HS
10am to 11.30am

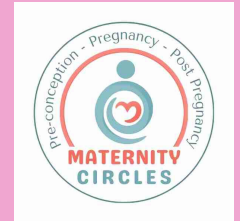
Family Navigator drop-in
Canterbury Nursery School
12.30pm to 2.30pm

Kids Time Workshop
Barkerend, 9th April
5pm - 7.30pm
(appointment only)

Friday

Midwife Clinics
Barkerend and Woodroyd Centre

Maternity Circle
Rockwell Centre
BD10 8DP
10am to 12 noon



New Stay and Play!
Fagley Primary School,
BD2 3PU
10am to 11.30am
(term time only)

**School Nurse drop-in
at Barkerend**
3rd April
10am to 12 noon

Happy Health Day
10th April
10am to 12 noon