

Bradford South area Family Hub

Reevy Hill Family Hub

Bedale Drive, BD6 3ST

TFD Family Hub

Broadstone Way, BD4 9BU

We also deliver services at:

Holme Wood Children's Centre

Haslemere Close, Holme Wood, BD4 9EB

Woodside Children's Centre

Fenwick Drive, BD6 2PG

The Meeting Place, Wyke

Town Gate, Wyke, BD12 9JA

Great Horton Community Hub

69 Beldon Rd, Bradford BD7 3PE



For more information on where we are and what we do, scan the QR code or visit fyi.bradford.gov.uk

Get in touch



Call us on 01274 434940 (open Mon-Thur 8.30am-5pm, 8.30am-4.30pm Fri)



Visit us at fb.com/BradfordSouthFamilyHub



Email us: Familyhubsouth@bradfordcft.org.uk

**BEST
START
IN LIFE**



Parenting programmes

We have a range of fantastic parenting programmes delivered at various times. You'll meet others in a similar situation in an informal and supportive atmosphere. You don't need a referral from another service, you can simply apply yourself on fyi.bradford.gov.uk or call us.

NEW: Support for parents, carers, teens and adults - free online courses that you can access 'on demand', day or night, pause and come back to whenever suits you.

Digital drop ins every day!

Do you need data, access to a laptop, or help to get online? Maybe you need to study, apply for a job, a school place or look for housing?

At Reevy Hill and TFD Family Hubs, you can access free wi-fi, use our computers and quiet space, headphones and printing facilities. We can also give you support with getting online if you need it. Give us a call, a message on social media or send us an email for more information.

FREE SIM cards

We can now provide 6 months of data to families through a FREE SIM card. For more information please contact us or pop in to Reevy Hill or TFD and see one of our lovely Family Navigators!



School Nurse Team – Drop-in or call 01274 221203

Well Baby/Weighing Clinic - For an appointment at the Well Baby clinic, call Health Visiting service on 01274 221223 or text chat health on 07312263240.

Baby Circles - CALLING ALL EXPECTANT PARENTS!! Grab a cuppa, connect with other pregnant women, seek wider support all whilst relaxing and enjoying a wide range of wellbeing and self-care activities. New mums welcome. Call us for more information.

Infant feeding support drop-in - The Community Infant Feeding Team offer friendly, warm and specialist support, including social support from volunteers. We provide support with breastfeeding and other feeding situations, whatever the age of your baby.

Play and learn - for children 0-5. No need to book, come play along with your children and make new friends.

Community drop-in - family navigators available to support you with all things family hub and signpost you to services to support your family, from cost of living to SEND services.

C-card scheme - supporting young People aged 13 to 24 to access FREE contraception, information and advice. Drop in to the hubs to sign up and access in a safe, confidential space.

Tea Time Club - Come and join in the fun at our free teatime club!! Games, craft and a light tea included. Children can also use our Chromebooks and free Wi-Fi to complete homework. We have digital champions available to help if needed.

Birth registrations - call 01274 432151 or click here (when using the timetable electronically) for an appointment.

Coffee Morning - access support for a range of needs, free Wi-Fi, laptops you can use whilst in the building, play activities for young children and access to our Sensory Space.

Kid's Time Workshop - Parents with mental illness and children 0-19 work together in dispelling stigma and building stronger families. We run drama groups for younger children and Teen talk as well as an adult group. Referral only, call Mind on 01274 730815 for more information.

Education drop-in - A session for parents and carers of children aged 5 to 16 providing non-judgmental support with school attendance concerns. Discuss worries, connect with support services, and receive advice from attendance support workers. Email Attendance@bradford.gov.uk with queries.

Stop Smoking Clinic - For further information, or to book an appointment, please call 01274 437700 or email hello@mylivingwell.co.uk

Parent and Carer panel - help to improve services in the district for parents/carers. Please ask us for more information.

Special Guardian's Support Group - a drop-in for SGO carers to get support from peers, build friendships and get professional advice. Also open to those with residential/child arrangement orders. Refreshments provided.

Easter Family Event - Easter-themed family fun Arts and Crafts, activities for under 11s with free refreshments/healthy snack. Please call or email us to book.

Foster Carer Support Group - This is a session for foster carers for more information please contact: Shahnaz Zaman - 07582107337 or email: shahnaz.zaman@bradfordcft.org.uk

South Bradford Family Hub - April Timetable

Monday

Midwife Clinic
TFD (appointments only)

C-Card Scheme (drop in)
Reevy Hill and TFD

Coffee Morning
Reevy Hill
(term time only)
9am - 10am



**Well Baby/
Weighing Clinic**
Reevy Hill
(appointment only)
9.30am - 12.15pm

**Health Visitor
Development Clinic**
(appointment only)
Woodside Children's Centre
9.30am to 12.15pm

Library OPEN
TFD Library, 10am - 2pm



Tuesday

Midwife Clinic
TFD (appointments only)

C-Card Scheme (drop in)
Reevy Hill and TFD

**Register the birth of
your baby**
at TFD: 14th and 28th April
at Reevy Hill: 7th and 21st
(appointment only)

Well Baby/ Weighing Clinic
Horton Park Medical Centre
7th and 21st April
9.30am to 12.15pm

Library OPEN
TFD Library, 10am - 2pm

Community drop-in
Great Horton Hub and
Library: 10am - 2pm

**Foster Carer Support
Group**
(appointment only)
Reevy, 28th April
10.30am - 12 noon

Education drop-in
TFD
14th and 28th April
12 noon - 2pm



Stop Smoking Clinic
TFD, 1pm to 4pm
(appointment only)

Wednesday

Midwife Clinic
TFD (appointments only)

C-Card Scheme (drop in)
Reevy Hill and TFD

Play and Learn
TFD Centre, 9am - 10am
(term time only)

**Special Guardian's
Support Group (drop-in)**
Reevy Hill, 22nd April
10.30am - 12pm

Well Baby/ Weighing Clinic
(appointment only)
TFD - 9.30am - 12.15pm

Development Reviews
(appointment only)
Reevy Hill
9.30am - 12.15pm

Library OPEN
TFD, 9am - 1pm
Easter Family

Easter Family Event
(booking required)
Reevy Hill, 1st April
2pm - 4pm

Tea Time Club
Reevy Hill
3pm - 4.30pm
(term time only)



Thursday

Midwife Clinic
TFD (appointments only)

C-Card Scheme (drop in)
Reevy Hill and TFD

Maternity Circle
Canterbury Nursery School
9am - 11am (term time only)

**Coffee Morning and
SkillsHouse**
TFD, 10am - 12 noon
(including cost of living
and incommunities
support on 30th April)

Well Baby/ Weighing Clinic
(appointment only)
Low Moor medical centre,
BD12 0TH
9.30am - 12.15pm

**Online SEND Toilet
Training Workshop**
9th April, 9.30am to 11.30am

**SEND Support 'Life Admin'
(parent-led session)**
TFD, 16th April
12 noon - 2pm

Infant Feeding Support
Reevy Hill, 10am - 12 noon

Education drop-in
Reevy Hill, 23rd April
10am - 12 noon

Baby Circles
TFD Library, 12.30pm - 2pm

Kids Time Workshop
16th April (referral only)
Reevy Hill, 5pm - 7.30pm

Friday

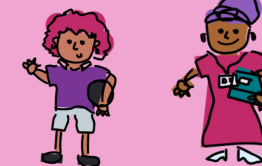
Midwife Clinic
TFD (appointments only)

C-card scheme (drop in)
Reevy Hill and TFD

Library OPEN
TFD Library, 9am - 1pm

Play and Learn
Reevy Hill (term time only)
9am - 10.30am

Maternity Circle
Reevy Hill
10.30am - 12.30pm



Saturday

Maternity Circle
Woodside Village Centre
10.30am - 12.30pm
11th April

