

Keighley and Shipley area Family Hub

Find us at

Rainbow Family Hub
14 Braithwaite Grove, BD22 6JB
Strong Close Nursery School
Airedale Road, BD21 4LW

We also deliver services at

Keighley Library
North Street, BD21 3SX
Shipley Library
2 Well Croft, BD18 3QH
The Trinity Centre
John Escritt Road, Bingley, BD16 2ST
Sue Belcher Centre
63 Bracken Bank Avenue, BD22 7AE
Denholme Primary School
Minorca Mount, BD13 4AY
Windhill Community Centre
Church Street, Shipley, BD18 2NR
Owlet Family Centre
Barncroft, Shipley, BD18 2JG

**For more information
on where we are and
what we do, scan the
QR code or visit
fyi.bradford.gov.uk**



Parenting programmes

We have a range of fantastic parenting programmes delivered at various times (we know how busy family life can be!) You'll meet others in a similar situation in an informal and supportive atmosphere.

You don't need a referral from another service, you can simply apply yourself on fyi.bradford.gov.uk or call us.

Our recent programmes include:

Cygnnet – For parents and carers of children 5-18 with an autism diagnosis. You'll develop your understanding of autism and learn practical solutions to support your child.

HENRY starting solids – Have you started introducing your baby to solid foods, or are you about to? Join us for a FREE workshop, and come away feeling more confident and with new ideas.

Our regular events

Play and learn – these drop-in sessions give you and your child lots of opportunities to explore, learn together and have fun!

School nurse parent drop-in – help with eating, lifestyles, relationships, emotions, body changes, growing up, sleeping and more. If you can't come but still need help, call the school nurses on 01274 221203.

Breastfeed Together – experienced peer supporters lead this friendly group. Get pregnancy, parenting and breastfeeding support and information and meet other parents. Email breastfeedtogether@bdct.nhs.uk to book.

Sensory room – Call or email us to book sessions at Rainbow. For sessions at Strong Close Nursery (Term Time) call 01535 605272. During school holidays contact Rainbow.

SEND inclusive sessions – open to all parents, carers and their children. Includes multi-sensory story time and access to a range of SEND resources to promote speech, language and sensory exploration. Just drop in.

Youth Club – for ages 11-19. A warm, safe and inviting space for young people with lots of activities on offer. Just drop in.

Wise Owls Language development advice drop-in – if you're concerned about your 18 month to 4 year old's language development, drop in to get advice from our language development workers.

Care and Share – Rainbow Hub's FREE Pre-loved shop, open weekdays 9-4.

Jump aboard – talk through concerns and how to support your child with an educational psychologist. Can help with autism, ADHD, speech and language, learning difficulties, social, emotional and sensory needs.

Portage play group – referral only; contact Christine on 07977160187 for details.

Baby Clinic – drop in to get your baby weighed

Get in touch

☎ Call us on 01535 618005 (open Mon-Thur 8.30am to 5pm, 8.30am to 4.30pm Fri)
🌐 Visit us at fb.com/KeighleyandShipleyFamilyHub
✉ Email us at Familyhubkeighleyshipley@bradford.gov.uk

Keighley and Shipley Family Hub – February Timetable

Monday

Sensory room

Rainbow 9-4pm
Strong close nursery school (afternoon only)

Midwife Clinics

Appointment only
All day at Rainbow, Strong Close nursery school and Owlet

Play and Learn

Keighley Library
9.30am to 10.30am (term time only)
Sue Belcher Centre
1pm to 2:30pm (term time only)

Breastfeed together

Trinity Centre
26th February
10am to 11.30am



Care and Share
Rainbow Hub's FREE pre-loved shop
9am - 4pm

Wise Owls Language Development

Keighley Library 9:00am to 10:00am

Baby Clinic

Rainbow, 1pm - 3pm

Tuesday

Sensory room

Rainbow 9-4pm
Strong close nursery school 3.30-4.30pm

Midwife Clinics

Appointment only
All day at Strong Close nursery school and Owlet; PM only at Rainbow

School nurse

6th Feb
Rainbow
1pm to 2.30pm
Shipley Library
9.30 to 11.30am



Play and Learn

Denholme Primary School
1pm to 2:30pm (term time only)

Chit Chat Group

Rainbow Family Hub
1:00pm to 2:30pm

Care and Share
Rainbow Hub's FREE pre-loved shop
9am - 4pm

PCSO drop-in

13th Feb
Rainbow, 10 to 11am

Wednesday

Sensory room

Rainbow 9-4pm
Strong close nursery school 3.30-4.30pm

Midwife Clinics

Appointment only
All day at Strong Close nursery school and Owlet

Portage play group

Trinity Centre,
10 - 11.15am
Referral only

Breastfeed together

Rainbow - 7th and 21st
11:45 am to 1:15pm

Jump aboard

Rainbow
21st Feb, 1pm to 3pm

Open access youth club

Rainbow, 6 - 8.30pm

Care and Share

Rainbow Hub's FREE pre-loved shop
9am - 4pm



Thursday

Sensory room

Rainbow 9-4pm
Strong close nursery school 3.30-4.30pm



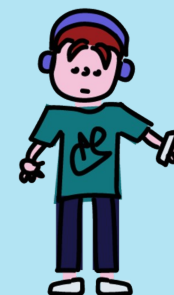
Midwife Clinics

Appointment only
All day at Rainbow, Strong Close nursery school and Owlet



Care and Share

Rainbow Hub's FREE pre-loved shop
9am - 4pm



Friday

Sensory room

Rainbow 9-4pm
Strong close nursery school (morning only)

Midwife Clinics

Appointment only
All day at Strong Close nursery school and Owlet; AM only at Rainbow

Play and Learn

Windhill Community Centre
9am to 10:30am (term time only)



Care and Share

Rainbow Hub's FREE pre-loved shop
9am - 4pm

