

Bradford East Locality Family Hub

Barkerend Family Hub

365 Barkerend Road, BD3 8QX

We also deliver services at:

Gateway

43 Thackeray Road, Ravenscliffe, BD10 0JR

Woodroyd Centre

Woodroyd Road, West Bowling, BD5 8EL

Communityworks

Undercliffe Lane, BD3 0DW

Canterbury Nursery School

Basil Street, Canterbury, BD5 9HL

Fagley Primary School

Falsgrave Avenue, BD2 3PU

Eccleshill Library

Bolton Road, BD2 4SR

St Clare's RC Church

Moorside Road, BD2 3JD

For more information
on where we are and
what we do, scan the
QR code or visit
fyi.bradford.gov.uk



Get in touch

- ☎ Call us on 01274 437523 (open Mon-Thur 8.30am-5pm, 8.30am-4.30pm Fri)
- F Visit us at fb.com/BradfordEastFamilyHub
- @ Email us at Familyhubeast@bradfordcft.org.uk



Parenting programmes

We have a range of fantastic parenting programmes for parents, carers and teens including online courses that you can access 'on demand', day or night, pause and come back to whenever suits you and groups that you can attend 'live' with other people or families, delivered both online and in person.

You don't need a referral from another service, you can apply yourself on fyi.bradford.gov.uk (select 'parenting programmes pathway') or call us.

Digital Spaces

Do you need data, access to a laptop, or help to get online? Maybe you need to study, apply for a job, a school place or look for housing?

At Barkerend Family Hub, you can access free wi-fi, use our computers and quiet space, headphones and printing facilities.

We can also give you support with getting online if you need it. Give us a call, a message on social media or send us an email for more information.

FREE SIM cards

We can now provide 6 months of data to families through a FREE SIM card. For more information please contact us or pop in to Barkerend Hub and see one of our lovely Family Navigators!



Birth registrations - scan the QR code to the left of this page, [click here](#) (if using this timetable electronically) or call 01274 432151 for an appointment.

Sensory Room - a therapeutic space for all families devoted to relaxing/developing the senses. Call to book.

Health Visitor, Baby and Midwife Clinics - including Clover midwife clinic. Appointment only; speak to your health visitor or midwife.

Baby Feeding drop-ins - friendly and experienced infant feeding specialists are here to support you with questions or concerns as well as every day feeding support. Breast pumps are available to borrow if you've seen a practitioner and there's a need identified.

Maternity Circle - drop in, we run a wide range of sessions to support pregnant mums and those with children under 2.

BD25 fun and activities - part of BD25 - doing arts & crafts and outdoor activities

LOCALA sexual health - drop-in clinic for sexual health advice.

Dad Matters drop-in - supporting expectant dads or new dads of 0-2s to have the best possible relationship with their family.

Toilet Training SEND workshop - guidance and support for toilet training of children 4+ with SEND. No diagnosis needed. For further information or booking, please call 01274 221203 between 08:00-16:00.

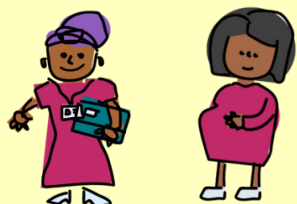
National Play Day Event - for children of all ages - enjoy arts, crafts and music with the Bradford 25 Creative Practitioners, low cost play ideas with 50 things to do before you're 5, learn to play chess and other board games or have fun building dens outside or in our sensory room. places are limited, please contact us to book.

Art and craft session - arts, crafts and outside gardening with the Bradford 25 creative practitioners. Spaces limited; please contact us to book.

Bradford East Locality Family Hub - August 2025 Timetable

Monday

Midwife Clinics
Barkerend and
Woodroyd Centre



Maternity Circle
Westminster Primary,
BD3 0HW (term time only)
9.30am to 11.30am



**Sensory Room
Booking**
Barkerend (all day)

Tuesday

Midwife Clinics
Barkerend and
Woodroyd Centre

**Health Visitor Baby
Weighing Clinic**
Barkerend
9.30am to 11.30am

Dad Matters Drop-in
Barkerend, 26th August
9.30am to 11.30am

Maternity Circle
CommunityWorks
10am to 12 noon



**Baby Feeding Support
Sessions**
Wrose Health Centre
1pm to 3pm

Digital drop-in
Barkerend
1pm to 2pm



**SEND toilet training
workshop for parents**
(appointment only)
Barkerend, 19th August
1pm to 4pm

**Sensory Room
Booking**
Barkerend (all day)

Wednesday

Midwife Clinics
Barkerend and
Woodroyd Centre

**Register the birth of
your baby**
Barkerend
(appointment only)

**Baby Feeding Support
Sessions**
Gateway
10am to 12 noon



**Health Visitor
Baby Weighing and
development clinics**
- Gateway
9.30am to 11.30am
- Barkerend 9.30am to
12 noon

Maternity Circle
Gateway
9.30am - 11.30am

**Sensory Room
Booking**
Barkerend (all day)



Thursday

Midwife Clinics
Barkerend and
Woodroyd Centre

BD25 fun and activities
Barkerend
9am to 11am

Coffee Morning
Barkerend
9am to 11.30am

**Health Visitor Baby
Clinic**
Wrose Health Centre
9.30am to 11.30am

National Play-day Event
Barkerend, 7th August
10am to 12pm and
1pm to 3pm
(two sessions)

Art and Craft session
Barkerend, 28th August
10am to 12 noon

Maternity Circle
Millside Centre, BD1 2HS
10am to 12 noon

Sensory room booking
Barkerend (all day)

Friday

Midwife Clinics
Barkerend and Woodroyd
Centre

Sensory Room Booking
Barkerend
(all day)



family hub

Start for Life