

Bradford West area Family Hub

Farcliffe Family Hub

56 Toller Lane, BD8 8QH

Bevan Family Hub

Family Hub entrance: Dale Street, BD1 4HT

Piccadilly entrance: 14 Piccadilly, BD1 3LS

We also deliver services at:

St Edmund's Children's Centre

Washington Street, BD8 9QW

Thornaby Hub

115 Thornaby Drive, Clayton, BD14 6HP

Midland Road Nursery School

Bateman Street, BD8 7DJ

Abbey Green Nursery

Green Lane, BD8 8HT

City Library

Centenary Square, BD1 1SD

For more information
on where we are and
what we do, scan the
QR code or visit
fyi.bradford.gov.uk



Get in touch

☎ Call us on 01274 436700 (Farcliffe)
or 01274 322400 (Bevan)

✉ Email Familyhubwest@bradfordcft.org.uk

F Visit us at fb.com/BradfordWestFamilyHub



Parenting programmes

We have a range of fantastic parenting programmes delivered at various times. You'll meet others in a similar situation in an informal and supportive atmosphere.

NEW: Support for parents, carers, teens and adults - free online courses that you can access 'on demand', day or night, pause and come back to whenever suits you.

Just visit us at fyi.bradford.gov.uk and select 'parenting programmes pathway' to get started.

Digital Spaces

Do you need data, access to a laptop, or help to get online? Maybe you need to study, apply for a job, a school place or look for housing?

At Farcliffe Family Hub, you can access free wi-fi, use our computers and quiet space, headphones and printing facilities.

We can also give you support with getting online if you need it. Give us a call, a message on social media or send us an email for more information.

FREE SIM cards

We can now provide 6 months of data to families through a FREE SIM card.

For more information please contact us or pop in to Farcliffe Hub and see one of our lovely Family Navigators!



Women's chit chat group – drop-in for a warm drink, chat and peer support.

Sensory play room – a therapeutic space, perfect for children with SEND. Call us to book.

Clothes shack – a free drop-in clothes recycle shop.

Job Club (City Library) - free work clubs to learn IT skills, create/update your CV, look for jobs and more.

Adult Social Care sessions – Drop in session for all those with social workers in the Adult Service

Baby feeding support sessions - infant feeding practitioners with specialist support available. Breast pumps available to borrow if you've seen a practitioner and a need is identified.

Study Stations - Now bookable through reception for everyone to use as a quiet space to work.

Bradford Stronger Together Coffee Morning - A relaxing time for parents of children who have additional needs.

Farcliffe Bookable Read and Rhyme Room - bookable by the hour for families to enjoy reading with their children.

Legal Support - Free family law advice. Call us to book.

Carer's Resource Coffee Morning - Drop in session for families for those with SEND.

Birth registrations - scan the QR code to the left of this page, **click here** (when using this timetable electronically) or call 01274 432151 for an appointment.

Bookable Outdoor Play Area - Our secure outdoor play area is bookable by ringing us on 01274 436700 Monday through to Friday. This can be used 1-1 or in a small group up to 10 people.

Millside maternity circle - a safe space for all to come along and connect with one another, reduce social isolation and to be supported on their parenting journey. Just drop in.

Stay and Play - Please ring 01274 436700 to book a space on to our stay and play sessions which are for pre-school age children in which they can enjoy fun times. Spaces limited.

Education drop-in - drop-in session for parents/ carers of children 5 to 16. Non-judgmental support with school attendance concerns. Discuss worries, connect with support services, and receive advice from attendance support workers. No booking required; email Attendance@bradford.gov.uk with any queries.

Mind the Gap session - contact rachel@mind-the-gap.org.uk

Farcliffe Winter Warm Space - This is our Warm Space for you to drop in for support and advice and hot drink.

Bumps and babies - A safe space for pregnant women and new parent/carers with babies to meet, share stories and make new friends. Come along and join the fun and sometimes messy baby friendly activities and learn about our Start for Life programmes.

West area Family Hub - February Timetable

Monday

Midwife clinic
Farcliffe (all day)
(Appointment only)

Children's community Support Team
(appointment only)
Farcliffe, 9th February
9am to 3pm

Clothes shack
Farcliffe, 10am to 3pm

Study Stations
Farcliffe (all day)



Farcliffe Bookable Read and Rhyme Room
10am to 3pm

Bookable Outdoor Play Area
Farcliffe, 10am to 2pm

Family Law Advice
Farcliffe (appointment only)
10am to 12 noon

Carer's Resource Coffee Morning
Farcliffe, 9th February
10.30am to 1pm

Bookable Sensory Room
Farcliffe, 10am to 3pm

Winter Warm Space
Farcliffe, 23rd February
1pm to 3pm



Tuesday

Midwife clinic
Farcliffe (Appointment only)
(all day)

Clothes shack
Farcliffe, 10am to 3pm

Study Stations
Farcliffe (all day)

Stay and Play
Thornaby Hub
(term time only)
9am to 10.30pm



Farcliffe Bookable Read and Rhyme Room
10am to 3pm



Education drop-in session
Farcliffe, 10am to 12 noon
(term time only)

Bookable Sensory Room
Farcliffe, 10am to 3pm

Bookable Outdoor Play Area
Farcliffe, 10am to 2pm

Women's chit chat group
Farcliffe, 1pm to 3pm (drop-in)

Wednesday

Midwife clinic
Farcliffe (all day)
(Appointment only)

Study Stations
Farcliffe (all day)



Clothes shack
Farcliffe, 10am to 3pm

Farcliffe Bookable Read and Rhyme Room - 10am to 3pm

Bookable sensory room
Farcliffe, 10am to 3pm

Bookable Outdoor Play Area
Farcliffe, 10am to 2pm

Baby feeding support sessions
Farcliffe
11.30am to 2.30pm

Bradford Stronger Together Coffee Morning
Farcliffe, 10am to 11.30am
25th February

Lilycroft Stay and Play
Farcliffe
1.15pm to 2.45pm
(term time only)

Well Baby/ Weighing Clinic with Stay and Play
Bethel Baptist Church,
BD15 9LL
9.30am to 12 noon



Thursday

Register the birth of your baby
Farcliffe (appointment only)

Midwife & development clinic
Farcliffe, 9am to 5pm
(Appointment only)

Study Stations
Farcliffe (all day)



Health Visitor Reviews
(by invitation)
Farcliffe, 9am to 1pm

Clothes shack
Farcliffe, 10am to 3pm

Locala drop in clinic
Farcliffe, 9am to 12 noon
12th February

Well Baby/ Weighing Clinic
Farcliffe, 9.30am to 12pm
and 1pm to 3pm (drop-in)

Maternity Circle
Millside Centre, BD1 2HS
10am to 11.30am

Job/ Work Club
City Library, 10am to 12 noon

Bookable Outdoor Play Area
Farcliffe, 10am to 2pm

Bookable sensory room
Farcliffe, 10am to 3pm

Stay and Play
Farcliffe (term time only)
1pm to 3pm



Bumps and babies (for pre-walkers only)
Farcliffe, 1.30pm to 2.45pm

Friday

Midwife clinic
Farcliffe (all day)
(Appointment only)



Study Stations
Farcliffe (all day)

Bookable sensory room
Farcliffe, 10am to 3pm

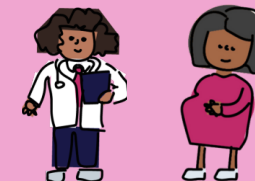
Farcliffe Bookable Read and Rhyme Room - 10am to 3pm

Clothes shack
Farcliffe, 10am to 3pm

Bookable Outdoor Play Area
Farcliffe, 10am to 2pm

My Creative Club by Mind the Gap
(appointment only)
Farcliffe, 1.30pm to 2.30pm

Well Baby/ Weighing Clinic
(txt Chat Health for a place)
Bevan Wellbeing Centre,
1pm to 3pm



Bevan Family Hub - February Timetable

Monday

New to English (ESOL)

10am - 12 noon

Just drop in

Learn English to help with everyday life; shopping, school and going to the doctor. We can help with speaking, listening, reading, and writing in English.

Enter via: Piccadilly



Tuesday

Midwife clinic

9am to 12 noon

Appointments only - book via midwife

Meet with your community midwife for all aspects of your care during pregnancy.

Enter via: Dale Street

Family Hub Play Together

1pm to 2.30pm, drop in

Come along and join in our fun, and sometimes messy, activities for families with children aged 0-2. There is time and space to have a chat with our friendly Family Navigators for advice and support.

Enter via: Dale Street

Family Friendly Warm Space

17th February, 10am to 1pm
Struggling with the rising cost of living? Come and keep warm, use the free wifi, charge any devices, hot drinks, porridge, soup. Family friendly activities for the school holiday.

Enter via: Piccadilly

You and Me cafe

2.00pm to 4.00pm

Call/txt 07904953864 or email info@volunteeringbradford.org

A welcoming creative space for adults with learning disabilities to meet, socialise, and enjoy arts and crafts and other activities. Run by volunteering@Bradford, there are also training opportunities available.

Enter via: Piccadilly

Wednesday

Your Space (for people seeking sanctuary)

10am - 12 noon

Just drop in

A welcoming space for asylum seekers and refugees. Get advice and support from services such as British Red Cross, Refugee Action, Solace, Housing and much more.

Enter via: Piccadilly

Read and Rhyme

1pm to 2.30pm
just drop in

Join our fun and playful sessions with lots of singing and rhyming to help with talking and reading! For families with children ages 0-2. There is time and space to have a chat with our friendly Family Navigators for advice and support.

Enter via: Dale Street



Thursday

Family Navigator Support

9am to 12 noon, drop in

Come chat with our friendly Family Navigators. We can:

- Welcome you into our Family Hub.
- Find groups and activities
- Signpost to services and support

Enter via: Dale Street



Bevan Babies

9.30am to 11.30am

Just drop in

Family stay and play session, soft and messy play, singing and dancing, meet other families, snacks available and lots of fun to be had!

Enter via: Piccadilly

Baby Feeding drop-in

9.30am to 11.30am

Meet with our friendly infant feeding team who can support with every day feeding questions or concerns. They can provide specialist advice and support where needed.

Enter via: Dale Street

Baby Massage

12.30am to 2.00pm

Booking Required

5 week course delivered by our friendly Family Hub staff who are trained in baby massage through the International Association of Infant Massage (IAIM). Book on fyi.bradford.gov.uk or ask a member of staff



Friday

Family Navigator Support

9am to 12 noon, drop in

Come chat with our friendly Family Navigators. We can:

- Welcome you into our Family Hub.
- Find groups and activities
- Signpost to services and support

Enter via: Dale Street



Health Visitor Development Clinic (mornings)

By appointment only
Call Health Visiting service on 01274 221223 or text chat health on 07312263240

Enter via: Dale Street



Well Baby/ Weighing Clinic

1pm to 3pm

Drop-in.

Enter via: Dale Street